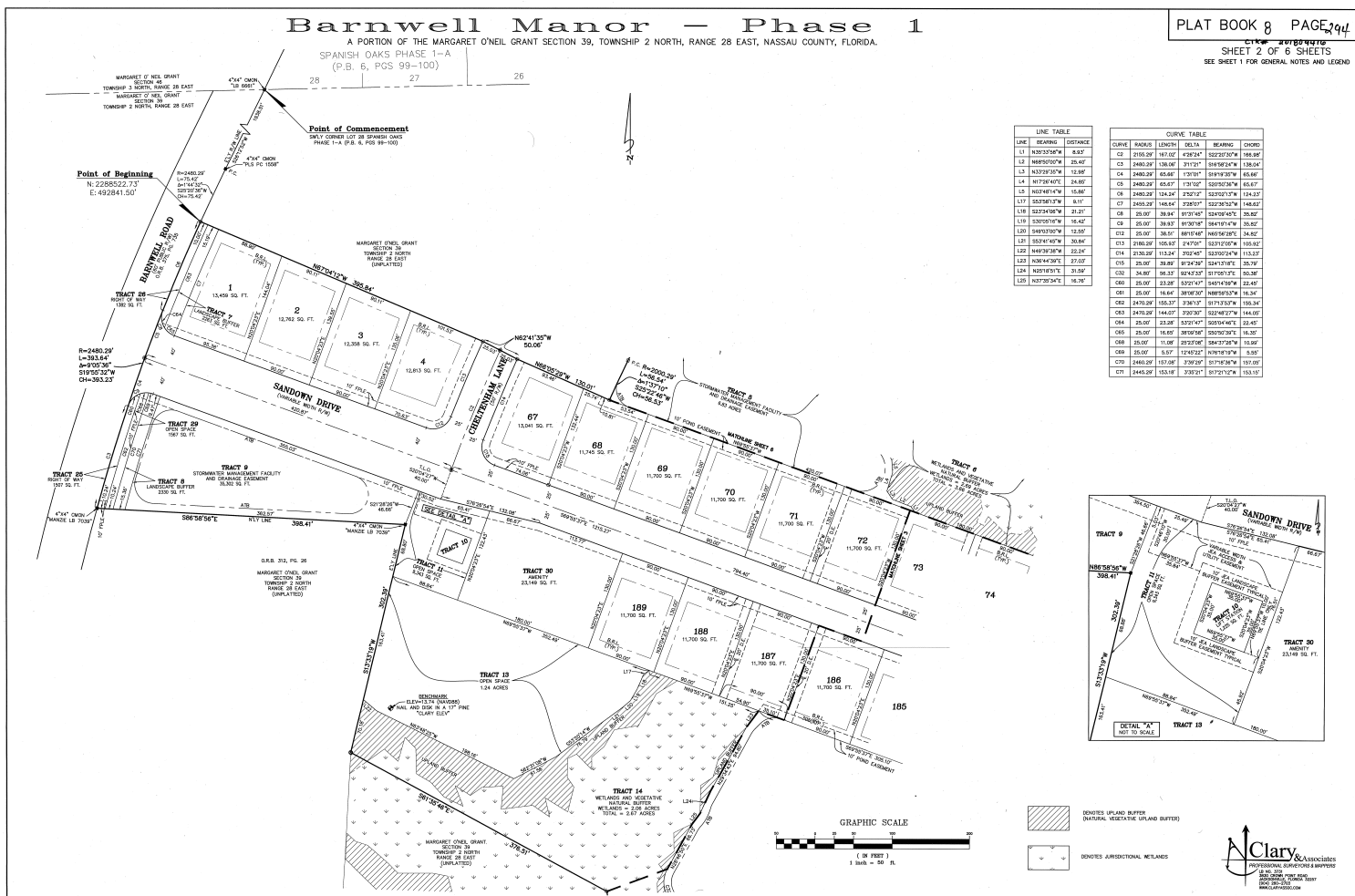


Barnwell Manor - Phase 1

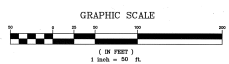
A PORTION OF THE MARGARET O'NEIL GRANT SECTION 39, TOWNSHIP 2 NORTH, RANGE 28 EAST, NASSAU COUNTY, FLORIDA.
SPANISH OAKS PHASE 1-A
(P.B. 6, PGS 99-100)

PLAT BOOK 8 PAGE 294

SHEET 2 OF 6 SHEETS
SEE SHEET 1 FOR GENERAL NOTES AND LEGEND



LINE TABLE			CURVE TABLE				
LINE	BEARING	DISTANCE	CURVE	RADIUS	DELTA	BEARING	CHORD
L1	N02°33'00"W	6.87	C1	370.37	167.02	4°24'47"	322.02
L2	N89°52'00"W	25.42	C2	2460.29	136.02	3°11'21"	316.92
L3	S23°23'33"W	13.88	C3	2460.29	65.84	1°01'01"	316.92
L4	N07°24'47"E	24.80	C4	2460.29	65.84	1°01'01"	316.92
L5	N02°48'14"W	15.86	C5	2460.29	124.87	2°20'17"	316.92
L11	S23°23'33"W	6.87	C6	2460.29	136.02	3°11'21"	316.92
L18	S23°24'08"W	21.21	C7	2460.29	65.84	1°01'01"	316.92
L19	S33°03'14"W	15.42	C8	2460.29	65.84	1°01'01"	316.92
L20	S49°03'00"W	13.88	C9	2460.29	65.84	1°01'01"	316.92
L21	S23°23'33"W	25.42	C10	2460.29	136.02	3°11'21"	316.92
L22	S23°23'33"W	25.42	C11	2460.29	136.02	3°11'21"	316.92
L23	N08°44'30"E	27.07	C12	2460.29	65.84	1°01'01"	316.92
L24	N08°00'00"E	29.98	C13	2460.29	65.84	1°01'01"	316.92
L25	N07°20'24"E	16.78	C14	2460.29	65.84	1°01'01"	316.92
L26	N07°20'24"E	16.78	C15	2460.29	65.84	1°01'01"	316.92
L27	N07°20'24"E	16.78	C16	2460.29	65.84	1°01'01"	316.92
L28	N07°20'24"E	16.78	C17	2460.29	65.84	1°01'01"	316.92
L29	N07°20'24"E	16.78	C18	2460.29	65.84	1°01'01"	316.92
L30	N07°20'24"E	16.78	C19	2460.29	65.84	1°01'01"	316.92
L31	N07°20'24"E	16.78	C20	2460.29	65.84	1°01'01"	316.92
L32	N07°20'24"E	16.78	C21	2460.29	65.84	1°01'01"	316.92
L33	N07°20'24"E	16.78	C22	2460.29	65.84	1°01'01"	316.92
L34	N07°20'24"E	16.78	C23	2460.29	65.84	1°01'01"	316.92
L35	N07°20'24"E	16.78	C24	2460.29	65.84	1°01'01"	316.92
L36	N07°20'24"E	16.78	C25	2460.29	65.84	1°01'01"	316.92
L37	N07°20'24"E	16.78	C26	2460.29	65.84	1°01'01"	316.92
L38	N07°20'24"E	16.78	C27	2460.29	65.84	1°01'01"	316.92
L39	N07°20'24"E	16.78	C28	2460.29	65.84	1°01'01"	316.92
L40	N07°20'24"E	16.78	C29	2460.29	65.84	1°01'01"	316.92
L41	N07°20'24"E	16.78	C30	2460.29	65.84	1°01'01"	316.92
L42	N07°20'24"E	16.78	C31	2460.29	65.84	1°01'01"	316.92
L43	N07°20'24"E	16.78	C32	2460.29	65.84	1°01'01"	316.92
L44	N07°20'24"E	16.78	C33	2460.29	65.84	1°01'01"	316.92
L45	N07°20'24"E	16.78	C34	2460.29	65.84	1°01'01"	316.92
L46	N07°20'24"E	16.78	C35	2460.29	65.84	1°01'01"	316.92
L47	N07°20'24"E	16.78	C36	2460.29	65.84	1°01'01"	316.92
L48	N07°20'24"E	16.78	C37	2460.29	65.84	1°01'01"	316.92
L49	N07°20'24"E	16.78	C38	2460.29	65.84	1°01'01"	316.92
L50	N07°20'24"E	16.78	C39	2460.29	65.84	1°01'01"	316.92
L51	N07°20'24"E	16.78	C40	2460.29	65.84	1°01'01"	316.92
L52	N07°20'24"E	16.78	C41	2460.29	65.84	1°01'01"	316.92
L53	N07°20'24"E	16.78	C42	2460.29	65.84	1°01'01"	316.92
L54	N07°20'24"E	16.78	C43	2460.29	65.84	1°01'01"	316.92
L55	N07°20'24"E	16.78	C44	2460.29	65.84	1°01'01"	316.92
L56	N07°20'24"E	16.78	C45	2460.29	65.84	1°01'01"	316.92
L57	N07°20'24"E	16.78	C46	2460.29	65.84	1°01'01"	316.92
L58	N07°20'24"E	16.78	C47	2460.29	65.84	1°01'01"	316.92
L59	N07°20'24"E	16.78	C48	2460.29	65.84	1°01'01"	316.92
L60	N07°20'24"E	16.78	C49	2460.29	65.84	1°01'01"	316.92
L61	N07°20'24"E	16.78	C50	2460.29	65.84	1°01'01"	316.92



RIPARIAN BUFFER (NATURAL VEGETATION UPLAND BUFFER)
 WETLANDS (ARBITRARY WETLANDS)

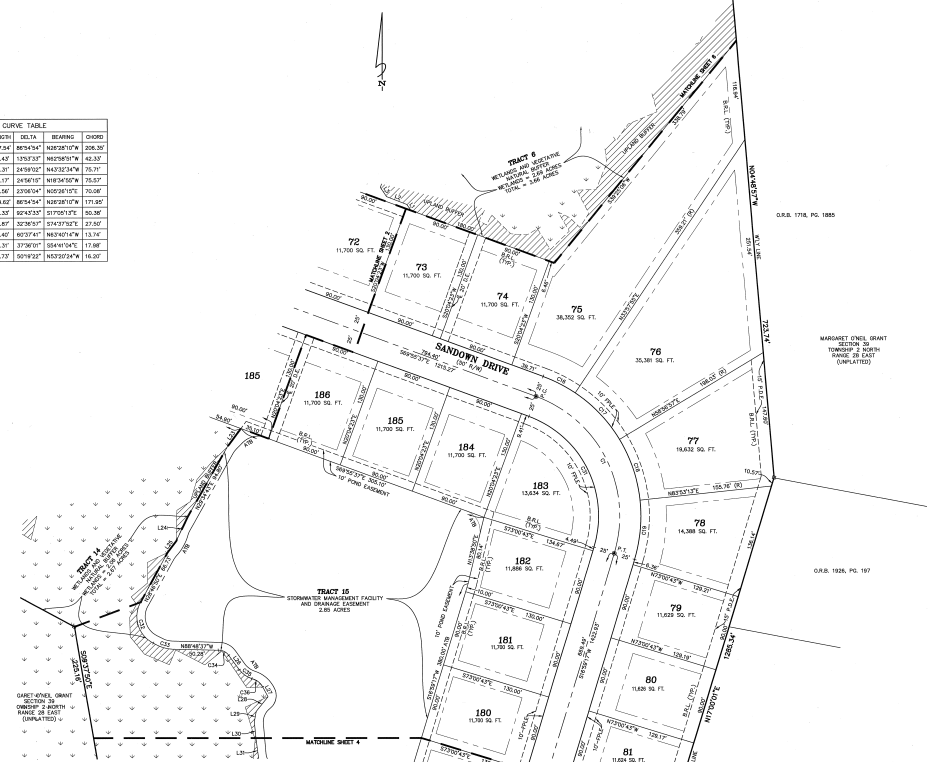
NClary & Associates
 PROFESSIONAL SURVEYORS & ENGINEERS
 1000 W. UNIVERSITY BLVD., SUITE 100
 GAITHERSBURG, MD 20878
 TEL: 301-281-1100
 FAX: 301-281-1101
 WWW.NCLARY.COM

Barnwell Manor - Phase 1

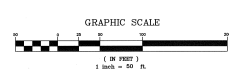
A PORTION OF THE MARGARET O'NEIL GRANT SECTION 39, TOWNSHIP 2 NORTH, RANGE 28 EAST, NASSAU COUNTY, FLORIDA.

PLAT BOOK 8 PAGE 295
 SHEET 3 OF 6 SHEETS
 SEE SHEET 1 FOR GENERAL NOTES AND LEGEND

LINE TABLE		CURVE TABLE	
LINE	BEARING DISTANCE	CURVE	POINTS
L1	N02°32'00"W 5.87'	C1	100.00'
L2	N00°00'00"W 23.45'	C2	100.00'
L3	N03°00'00"W 18.00'	C3	100.00'
L12	N00°44'30"E 27.02'	C17	175.00'
L14	N00°00'00"E 25.50'	C18	175.00'
L15	N07°00'00"E 16.70'	C19	175.00'
L16	S00°33'24"E 21.24'	C20	100.00'
L17	S00°17'00"E 13.10'	C21	100.00'
L18	N00°00'00"E 13.10'	C22	100.00'
L19	N01°15'00"E 12.48'	C23	100.00'
L20	N00°21'00"E 21.20'	C24	100.00'
L21	N00°40'00"E 20.30'	C25	100.00'



DENOTES UPLAND BUFFER (NATURAL VEGETATION UPLAND BUFFER)
 DENOTES ADJUNCTIONAL WELANDS



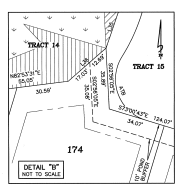
Barnwell Manor — Phase 1

A PORTION OF THE MARGARET O'NEIL GRANT SECTION 39, TOWNSHIP 2 NORTH, RANGE 28 EAST, NASSAU COUNTY, FLORIDA.

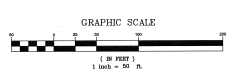
PLAT BOOK 8 PAGE 216
 SHEET 4 OF 6 SHEETS
 SEE SHEET 1 FOR GENERAL NOTES AND LEGEND

LINE	BEARING	DISTANCE
L12	N60°27'14"W	21.30'
L13	N67°47'14"W	25.30'
L14	N39°52'28"W	17.74'
L15	N61°17'04"W	14.64'
L16	N60°54'14"W	36.20'
L17	N39°59'10"W	38.43'
L18	N49°52'12"E	26.72'
L19	S65°43'37"E	43.36'
L20	N46°22'10"E	22.74'
L40	S28°10'17"E	38.66'
L41	S42°54'17"E	21.49'
L42	S18°38'47"E	16.50'

CURVE	RADIUS	CHORD	BEARING	CHORD	
C22	25.00'	38.27'	S00°00'00"	N69°02'47"W	26.36'
C23	25.00'	23.00'	S2°42'20"	S87°57'25"W	22.20'
C24	25.00'	26.80'	S69°07'07"	N42°52'22"E	13.11'
C25	45.00'	57.00'	S01°10'07"	S42°30'30"E	50.27'
C26	45.00'	47.12'	S69°09'39"	S51°33'33"W	44.18'
C27	45.00'	43.87'	S44°13'47"	S74°07'00"W	44.83'
C28	45.00'	73.74'	S43°32'34"	N43°52'29"W	69.89'
C29	25.00'	24.00'	S32°38'14"	S43°17'36"E	24.89'
C30	25.00'	26.37'	S00°00'00"	N11°03'17"E	31.30'



DENOTES WETLAND BUFFER (NATURAL VEGETATION WETLAND BUFFER)
 DENOTES JURISDICTIONAL WETLANDS



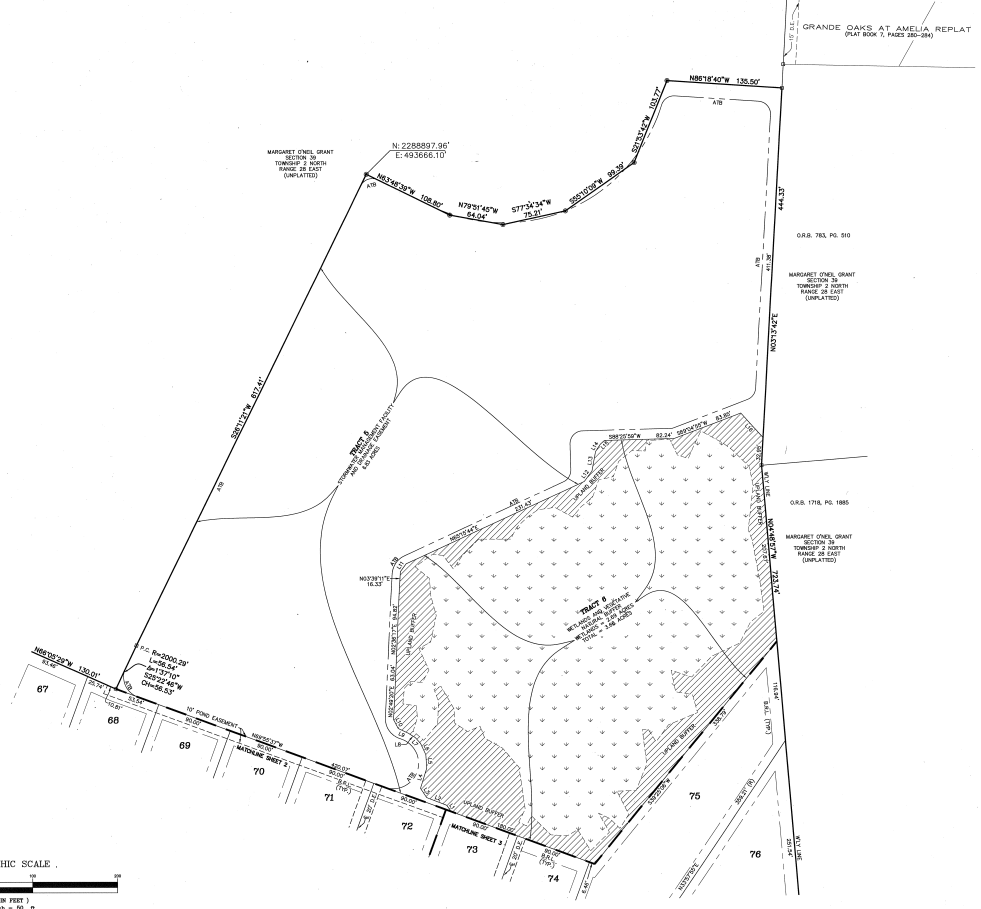
Barnwell Manor - Phase 1

A PORTION OF THE MARGARET O'NEIL GRANT SECTION 39, TOWNSHIP 2 NORTH, RANGE 28 EAST, NASSAU COUNTY, FLORIDA.

PLAT BOOK 8 PAGE 298

CLARY & ASSOCIATES
SHEET 6 OF 6 SHEETS
SEE SHEET 1 FOR GENERAL NOTES AND LEGEND

LINE	BEARING	DISTANCE
L1	N85°53'30"W	45.87
L2	N85°53'30"W	25.47
L3	N33°22'30"W	13.86
L4	N17°54'45"W	24.86
L5	N52°48'14"W	15.86
L6	N24°49'30"W	14.46
L7	N42°52'30"W	8.37
L8	N57°22'18"W	8.47
L9	N64°22'30"W	13.27
L10	N67°22'30"W	11.76
L11	N33°50'07"E	11.32
L12	N38°43'07"E	13.27
L13	N10°24'14"E	23.37
L14	N33°23'17"E	10.14
L15	N47°57'30"E	8.87
L16	S42°12'30"E	38.87



 INDICATES UPLAND BUFFER (NATURAL VEGETATIVE UPLAND BUFFER)
 INDICATES ABANDONED METLINES

